

OMEN

WIRELESS MACHINE



USER MANUAL

OMEN

CONTENTS

MACHINE BREAKDOWN	3
TECHNICAL DATA	4
RCA CONNECTION	5
MAIN BODY	6
GRIP DETAILS	7
OMEN BUTTON CONTROLS	8
MOTION CONTROL	9
BATTERY CHARGER	10
MAINTENANCE & WARRANTY	11

OMEN

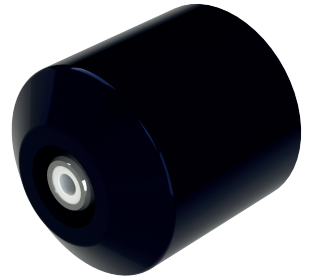
MACHINE BREAKDOWN



Wireless connection powered by a rechargeable Li-ion battery.

Tilt control enables the user to change voltage seamlessly.

Traditional RCA back connection.



Updated direct drive motor encasing a brand new reinforced oil bearing for seamless rotations.

A 'middle of the road' cam stroke of 3.5mm, suitable for all tattoo styles and techniques.

3.5

Smooth contact plate for quick connection changes.



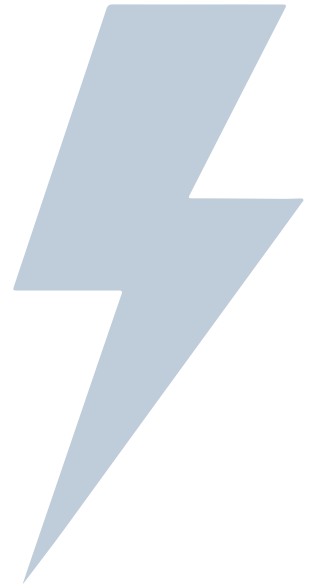
Autoclavable 32-36mm ergonomic grip. Shape and size chosen by artists from the Omen's predecessor machine.

Made from 6063 graded aluminium alloy.

Inside ratchet mechanism design allows for adjustable needle depth.

TECHNICAL DATA

Operating Voltage:	5 - 12 V
Stroke:	3.5 mm
Drive:	Direct Drive
Dimensions:	32mm Dia, 135mm H
Weight (with battery):	207.5g
Weight (without battery):	180g
Weight (with RCA back):	189g
Charger Connection:	USB Type A



PACKAGING SYMBOLS



Limiting the use of disposable batteries & the greenhouse gases produced from manufacturing, Li-ion batteries can be reused to help the environment.



UKAS is recognised by government, to assess against internationally agreed standards, organisations that provide certification, testing, inspection and calibration services.



Recyclable packaging.



The CE symbol must be affixed to many products before they can be sold on the European market.



The WEEE Symbol means that electrical and electronic items should not be disposed of in your dustbin or wheelie bin, but should be recycled.



The Ghost OMEN can be controlled via motion/tilt controls.



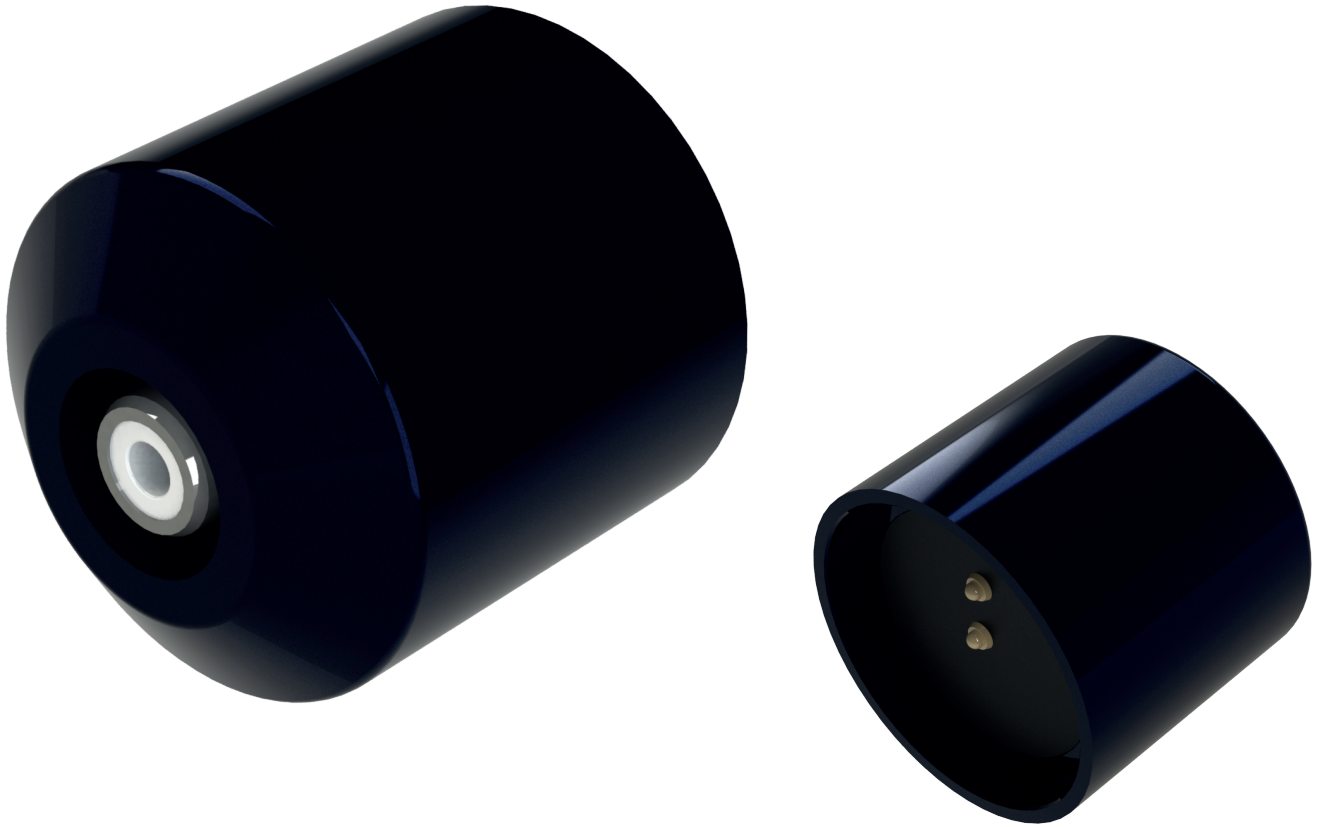
USB Connection required for use of the OMEN Battery Charger.



Charging speed is faster compared to other generic chargers.

OMEN

RCA CONNECTION



The Ghost OMEN Wireless Machine has a detachable back, meaning the artist can switch between the RCA connection back or the wireless back whenever they need to. Sometimes, tradition just can't be beaten.

OMEN

MAIN BODY

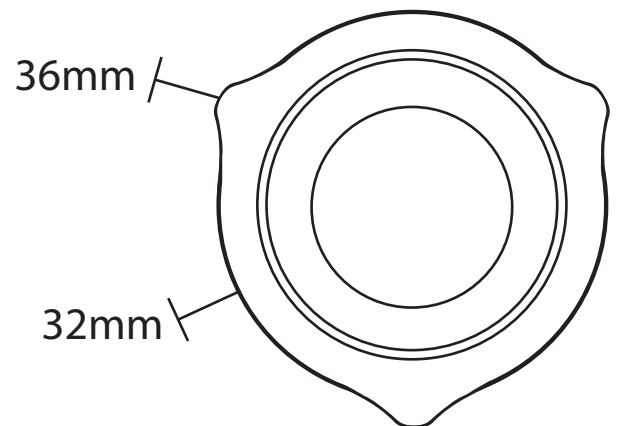


The main body of the Ghost OMEN is made up of 2 parts, with the interchangeable RCA connection or wireless back and the core. The core contains an updated direct drive motor & reinforced oil bearing combination made specifically for the OMEN. A smooth connection pad allows the artist to change from wireless to wired seamlessly.

GRIP DETAILS



The Ghost OMEN Grip has kept the favoured shape of its predecessor, only growing from 25mm to 32mm for a more hand-filling feel.



The inside of the grip has been designed with a needle depth adjustment ratchet, for accuracy when changing needle depth. The 6063 graded aluminium alloy grip is completely autoclavable.*

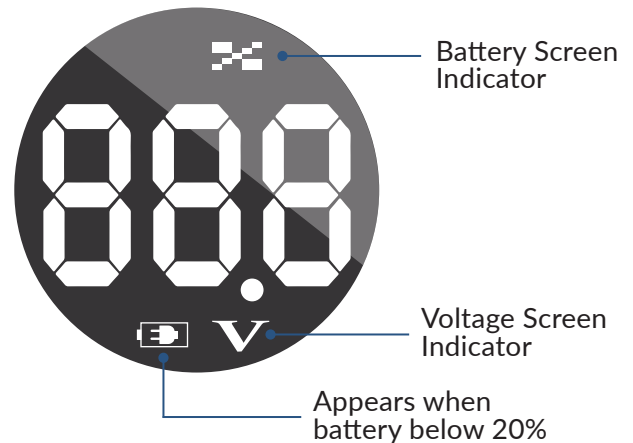
* For recommended autoclave settings and warranty cover please refer to page 11.

BUTTON CONTROLS

LED Display

Screen 1 displays the current machine voltage, which is shown in 0.2V increments.

Screen 2 displays the current charge percentage for the rechargeable Li-ion battery.



Button Controls

To power on/off the machine, hold down the power button for 3 seconds.

To start or stop the machine once it's on, lightly press the power button.

Double click the power button to bring up the Battery indicator screen. After 5 seconds, the OMEN will automatically return to the Voltage indicator screen.



MOTION CONTROL



Motion Controls

The voltage of the Ghost OMEN can be increased and decreased by the use of its one-of-a-kind motion control.

To use the motion controls the machine must be running.

Whilst the machine is running, hold down the power button and tilt the OMEN to the left or right depending on whether voltage needs to be increased or decreased.

To decrease the voltage, tilt the machine to the left. To increase the voltage, tilt the machine to the right.

The OMEN's voltage fluctuates in 0.2 volt increments, between 5 - 12 volts.

BATTERY CHARGER

Created for the Ghost OMEN Wireless Pen Machine, this charger is strictly for the use of charging the OMEN Li-ion rechargeable batteries.

With its speed charging trait, the OMEN Battery Charger will fully charge the batteries 30% quicker compared to standard battery chargers.

The USB-A charging cable already attached to the base of the charger makes it convenient for in studio use and portability purposes.



The OMEN Rechargeable Li-ion Batteries that are included with the OMEN are strictly only for use with the Ghost OMEN Pen Machine.

12000 mAh

Minimum 5 hours working time.

3 hours charging time.



Whilst charging, the coloured LED on the front of the Battery Charger will indicate whether the battery is either partly or fully charged.

If the LED is red in colour, the battery currently charging is partly charged,



If the LED is green in colour, the battery currently charging is fully charged and ready for use.



Maintenance

- We recommend wrapping the Ghost OMEN using protective pen covers to eliminate the danger of cross contamination.
- The outer body & grip can be sanitised with cold sterilisation products.
- When cleaning using these products, never spray or apply them directly to the machine to prevent fluids entering. Do not use lint based wipes.
- The Ghost OMEN is pre-lubricated during the manufacturing process. Do not apply additional lubrication to the interior unless instructed otherwise.
- Whilst charging the OMEN Li-ion batteries, try not to overcharge them for long periods of time to decrease the chance of the battery life becoming hindered.
- Use only cartridges with a safety membrane to avoid back flow of fluids.
- We recommend using ~~HEX~~ Cartridges with the Ghost OMEN.

Warranty

- Internal components of the Ghost OMEN are subject to 'wear and tear' over time, there is a 1 year warranty on internal parts & repairs from the date of purchase.
- If there are signs of physical damage (machine being dropped etc.), internal damage due to foreign fluids entering the machine, or the internal parts showing signs of tampering, **warranty will be void.**

Autoclave Suggestions

- We advise artists to only use de-ionised water whilst autoclaving the Ghost OMEN Aluminium Grip.*
- If the Ghost OMEN Grip becomes damaged from the use of chemical based autoclave solutions, it will not be covered by warranty.
- **Autoclaving will fade colours naturally over time - use at artist's own risk.**

*tested with steam at 250°F (121°C), with pressure up to 15psi.